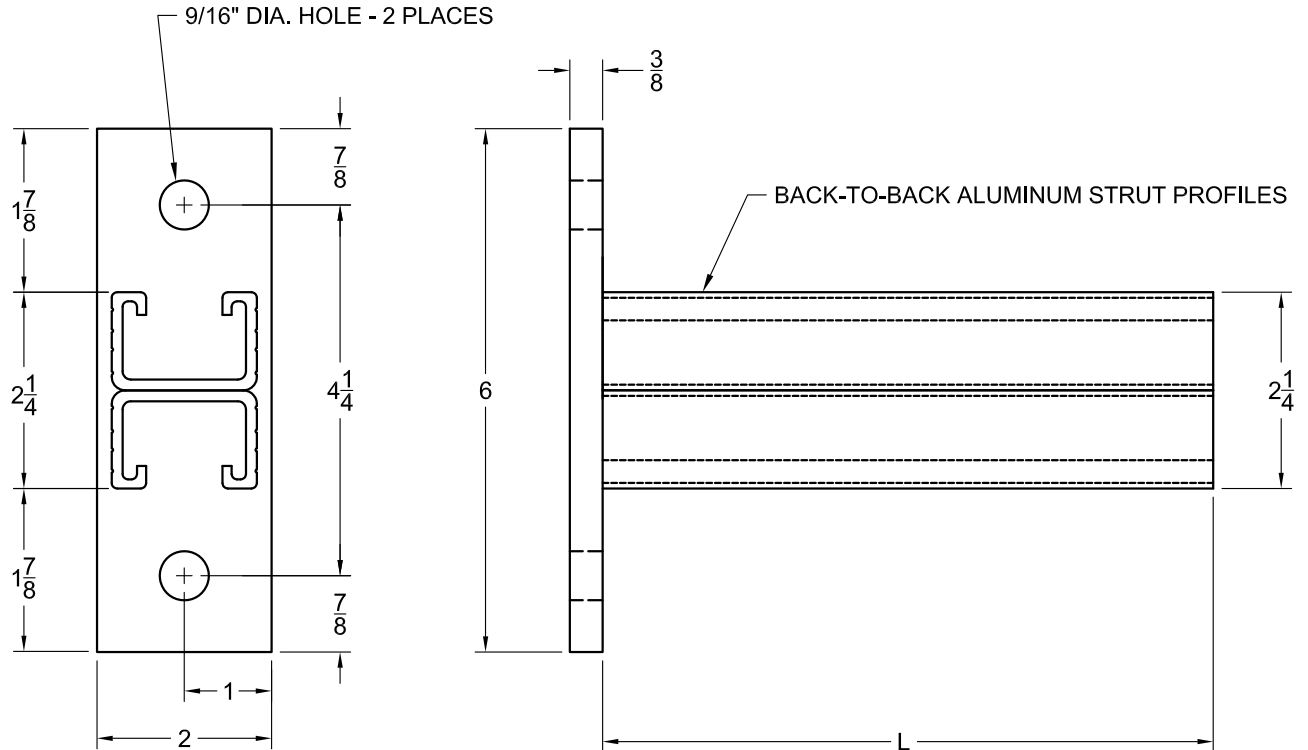


NO.	REVISION	BY	DATE	MATERIAL I.D.
0	APPROVED	TM	12-28-15	WBSC



‡	CATALOG NUMBER	BRACKET WIDTH		FOR CHANNELS
		L*	ACTUAL	
	WBSC-A-7	7	7.00"	3" WIDE
	WBSC-A-8	8	8.00"	4" WIDE
	WBSC-A-10	10	10.00"	6" WIDE

NOTES:

1. COMPLETE ASSEMBLY CONSISTS OF (1) STRUT BRACKET. CLAMPS AND FASTENERS ARE NOT INCLUDED.

MATERIAL: 3/16" THICK ALUMINUM ALLOY 5052

NOTE: ALL DIMENSIONS ARE SUBJECT TO THE MANUFACTURING TOLERANCE SPECIFICATIONS IN DOCUMENT USP-QA-05-02.

ATKORE		SHEET NO. 1 OF 1
560 WHARTON CIRCLE, SUITE E ATLANTA, GA 30336 USA		PHONE: 404-696-8585 FAX: 404-696-8599
DESCRIPTION STRUT BRACKETS FOR CABLE CHANNELS		
CATALOG NUMBER WBSC-A-(L*)		CATALOG NUMBER VARIABLES L* = BRACKET WIDTH (07 = 7", 08 = 8", 10 = 10")