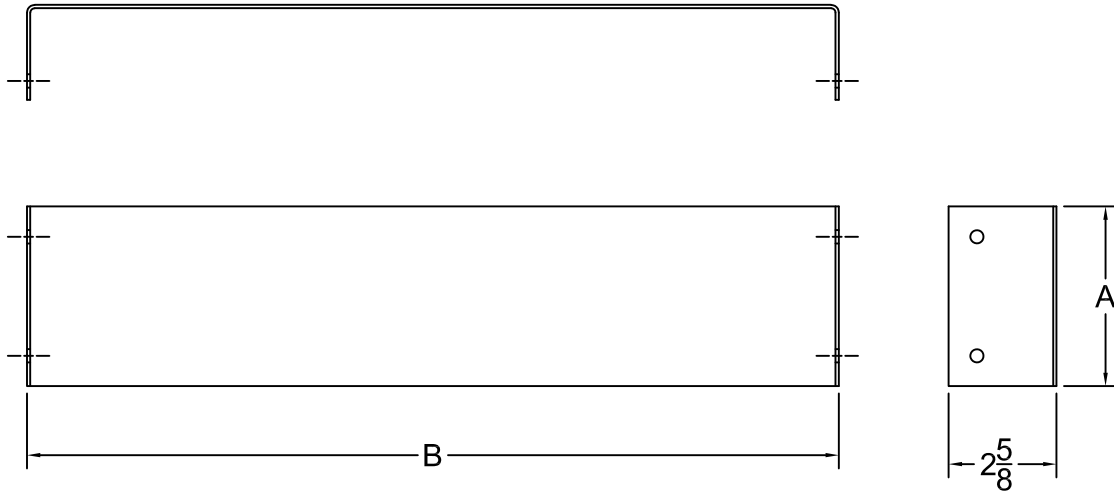
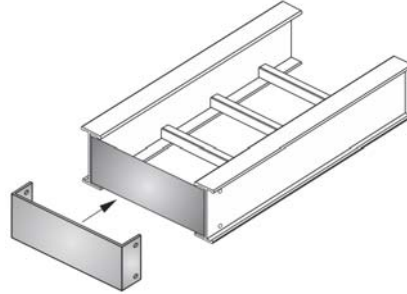




NO.	REVISION	BY	DATE	MATERIAL I.D.
0	APPROVED	TM	04-04-11	BE
1	CHANGED WIDTH OF SIDE TO 2-5/8"	WW	03-01-17	



BLANK: W\* + 5-1/16"

‡ MARK "√" IN BOX TO INCLUDE IN SUBMITTAL

TRAY SIDE RAIL HEIGHT		CATALOG NUMBER	A	‡
H* (NOMINAL)	ACTUAL			
4	4.25"	BE-A4-(W*)-(F*)	3.75"	
5	5.25"	BE-A5-(W*)-(F*)	4.75"	
6	6.25"	BE-A6-(W*)-(F*)	5.75"	
7	7.25"	BE-A7-(W*)-(F*)	6.75"	

W* WIDTH	B	‡
6	5.88"	
9	9.88"	
12	11.88"	
18	17.88"	
24	23.88"	
30	29.88"	
36	35.88"	

F*	FASTENER MATERIAL	INCLUDED FASTENERS	FASTENER CATALOG NO.	QTY.	‡
G	GEOMET-PLATED STEEL	3/8" x 3/4" RIBBED-NECK SCREW	F-RNS-38-34-G	4	
		3/8" FLANGED HEX NUT	F-FHN-38-G	4	
S	TYPE 316 STAINLESS STEEL	3/8" x 3/4" RIBBED-NECK SCREW	F-RNS-38-34-S	4	
		3/8" FLANGED HEX NUT	F-FHN-38-S	4	

**NOTES:**

1. COMPLETE ASSEMBLY CONSISTS OF (1) BLIND END PLATE WITH FASTENERS INDICATED.
2. CONSTRUCTION IS ARC-WELDED.

**MATERIAL:** 0.063" ALUMINUM ALLOY 5052

NOTE: ALL DIMENSIONS ARE SUBJECT TO THE MANUFACTURING TOLERANCE SPECIFICATIONS IN DOCUMENT USP-QA-05-02.

<b>ATKORE</b>		SHEET NO. 1 OF 1
560 WHARTON CIRCLE, SUITE E ATLANTA, GA 30336 USA		PHONE: 404-696-8585 FAX: 404-696-8599
DESCRIPTION <b>BLIND END - ALUMINUM</b>		
CATALOG NUMBER  <b>BE-A(H*)-(W*)-(F*)</b>		CATALOG NUMBER VARIABLES H* = NOMINAL TRAY SIDE RAIL HEIGHT IN INCHES (4, 5, 6, 7) W* = TRAY WIDTH IN INCHES (06, 09, 12, 18, 24, 30, 36) F* = FASTENER MATERIAL (G OR S)