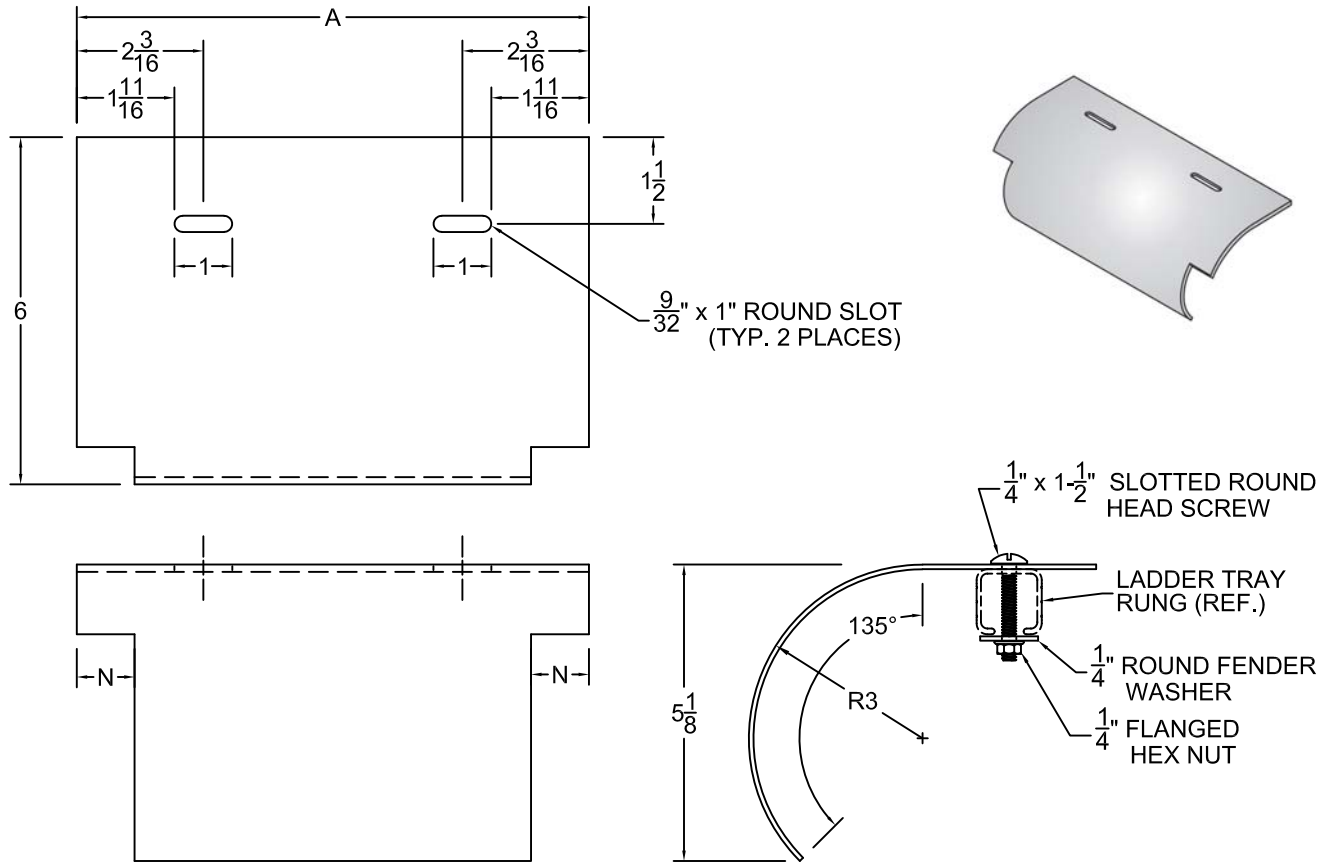




NO.	REVISION	BY	DATE	MATERIAL I.D.
0	APPROVED	TM	01-22-11	LD-A
1	ADDED CLASS 4 VERSION, REVISED TITLE BLOCK	TM	07-01-15	



‡	CATALOG NUMBER	W*	TRAY WIDTH	A
	LD-A-(C*)-06-(F*)	06	6"	5-3/4"
	LD-A-(C*)-09-(F*)	09	9"	8-3/4"
	LD-A-(C*)-12-(F*)	12	12"	11-3/4"
	LD-A-(C*)-18-(F*)	18	18"	17-3/4"
	LD-A-(C*)-24-(F*)	24	24"	23-3/4"
	LD-A-(C*)-30-(F*)	30	30"	29-3/4"
	LD-A-(C*)-36-(F*)	36	36"	35-3/4"

‡	F*	FASTENER MATERIAL	INCLUDED FASTENERS	FASTENER CATALOG NO.	QTY.
	Z	ZINC-PLATED STEEL	1/4" x 1-1/2" SLOTTED ROUND SCREW	F-SRS-14-15-Z	2
			1/4" FLANGED HEX NUT	F-FHN-14-Z	2
			1/4" ROUND FENDER WASHER	F-RFW-14-Z	2
	S	TYPE 316 STAINLESS STEEL	1/4" x 1-1/2" SLOTTED ROUND SCREW	F-SRS-14-15-S	2
			1/4" FLANGED HEX NUT	F-FHN-14-S	2
			1/4" ROUND FENDER WASHER	F-RFW-14-S	2

‡	TRAY FITTING CLASS (C*)	SIDE RAIL TOP FLANGE WIDTH	N
	1	1-1/8"	3/8"
	2	2"	1-1/4"
	3	2-3/8"	1-9/16"
	4	2-3/4"	2"

‡ MARK "√" IN BOX TO INCLUDE IN SUBMITTAL

NOTES:

1. COMPLETE ASSEMBLY CONSISTS OF (1) DROPOUT PLATE WITH FASTENERS INDICATED.

2. FIELD DRILL (2) 9/32" DIA. HOLES IN TRAY RUNG TO ACCEPT 1/4" DIA. FASTENERS.

3. LADDER DROPOUTS PROVIDE A SMOOTH RADIUS FOR CABLES EXITING THROUGH THE BOTTOM OF THE CABLE TRAY.

MATERIAL: 0.080" ALUMINUM ALLOY 5052-H32

NOTE: ALL DIMENSIONS ARE SUBJECT TO THE MANUFACTURING TOLERANCE SPECIFICATIONS IN DOCUMENT USP-QA-05-02.

ATKORE		SHEET NO. 1 OF 1
560 WHARTON CIRCLE, SUITE E ATLANTA, GA 30336 USA		PHONE: 404-696-8585 FAX: 404-696-8599
DIMENSIONS INCHES		
DESCRIPTION CABLE DROPOUT FOR LADDER TRAYS - ALUMINUM		
CATALOG NUMBER LD -A -(C*) -(W*) -(F*)		CATALOG NUMBER VARIABLES C* = TRAY FITTING CLASS (1, 2, 3, 4) W* = NOMINAL WIDTH IN INCHES (06, 09, 12, 18, 24, 30, 36) F* = FASTENER MATERIAL (Z, S)