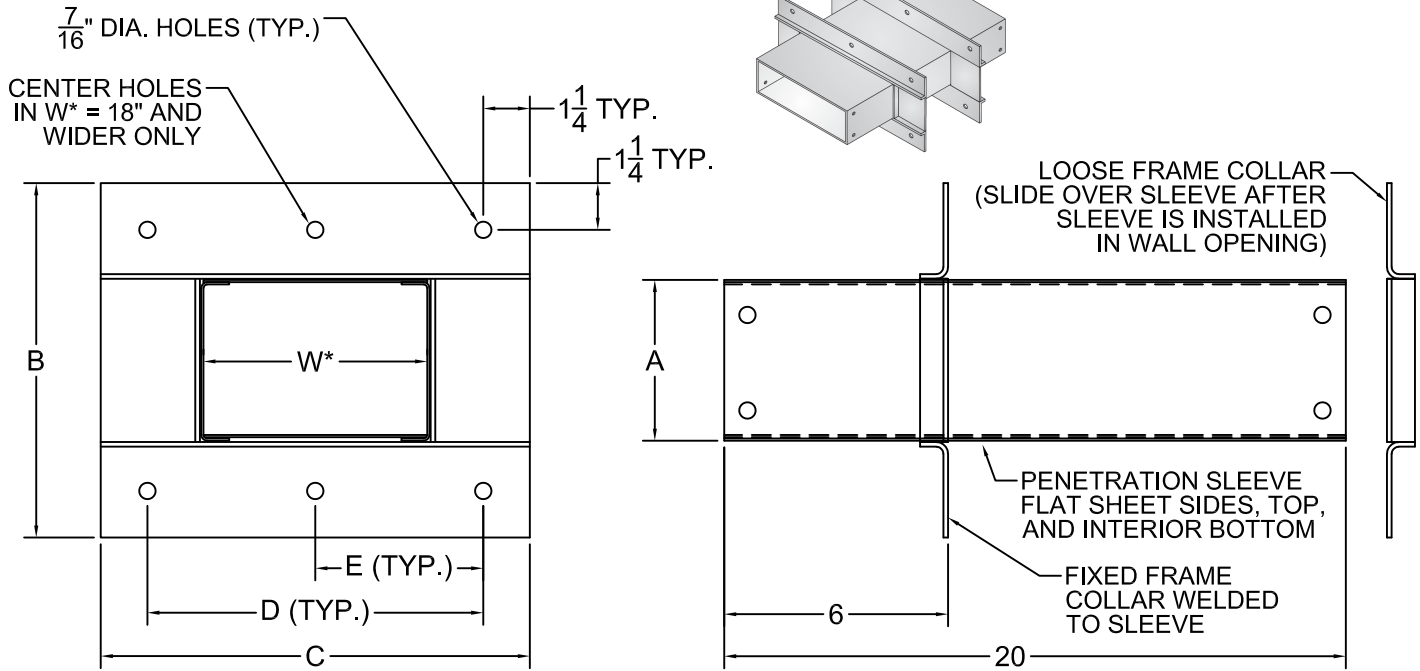




NO.	REVISION	BY	DATE	MATERIAL I.D.
0	APPROVED	TM	05-02-12	WPS



M*	WALL PENETRATION SLEEVE FINISH	‡
M	MILL GALVANIZED PER ASTM A-653	
H	HOT-DIP GALV. AFTER FAB. PER ASTM A-123	

W* WIDTH	C	HOLE QTY.	D	E	‡
6	11.5"	4	9"	N/A	
9	14.5"	4	12"	N/A	
12	17.5"	4	15"	N/A	
18	23.5"	6	21"	10.5"	
24	29.5"	6	27"	13.5"	
30	35.5"	8	33"	11"	
36	41.5"	8	39"	13"	

TRAY SIDE RAIL HEIGHT		CATALOG NUMBER	A	B	‡
H* (NOMINAL)	ACTUAL				
4	4.25"	WPS-(M*)4-(W*)-(F*)	4.31"	9.5"	
5	5.25"	WPS-(M*)5-(W*)-(F*)	5.31"	10.5"	
6	6.25"	WPS-(M*)6-(W*)-(F*)	6.31"	11.5"	
7	7.25"	WPS-(M*)7-(W*)-(F*)	7.31"	12.5"	

F*	FASTENER MATERIAL	INCLUDED FASTENERS	FASTENER CATALOG NO.	QTY.	‡
G	GEOMET-PLATED STEEL	3/8" x 3/4" RIBBED-NECK SCREW	F-RNS-38-34-G	16	
		3/8" FLANGED HEX NUT	F-FHN-38-G	16	
	ALUMINUM	STANDARD SPLICE PLATE PAIRS	SPS-A(H*)-G4	2	
S	TYPE 316 STAINLESS STEEL	3/8" x 3/4" RIBBED-NECK SCREW	F-RNS-38-34-S	16	
		3/8" FLANGED HEX NUT	F-FHN-38-S	16	
	ALUMINUM	STANDARD SPLICE PLATE PAIRS	SPS-A(H*)-S4	2	

‡ MARK "√" IN BOX TO INCLUDE IN SUBMITTAL

NOTES:

- COMPLETE ASSEMBLY CONSISTS OF (1) WALL SLEEVE WITH FIXED COLLAR, (1) LOOSE COLLAR, AND (2) PAIRS OF SPLICE PLATES WITH FASTENERS INDICATED.
- SLEEVE TOP, BOTTOM, AND SIDES ARE 16 GAGE FLAT SHEET METAL .
- WALL OPENING: (A + 1/4") HIGH x (W + 1/4") WIDE.
- CONSTRUCTION IS ARC-WELDED.

MATERIAL: STEEL; 11 GA COLLARS, 16 GA SLEEVE

NOTE: ALL DIMENSIONS ARE SUBJECT TO THE MANUFACTURING TOLERANCE SPECIFICATIONS IN DOCUMENT USP-QA-05-02.

ATKORE 560 WHARTON CIRCLE, SUITE E PHONE: 404-696-8585 ATLANTA, GA 30336 USA FAX: 404-696-8599		SHEET NO. 1 OF 1
DIMENSIONS INCHES		
DESCRIPTION WALL PENETRATION SLEEVE		
CATALOG NUMBER WPS-(M*)(H*)-(W*)-(F*)		CATALOG NUMBER VARIABLES M* = MATERIAL FINISH (M OR H) H* = NOMINAL TRAY SIDE RAIL HEIGHT IN INCHES (4, 5, 6, 7) W* = TRAY WIDTH IN INCHES (06, 09, 12, 18, 24, 30, 36) F* = FASTENER MATERIAL (G OR S)