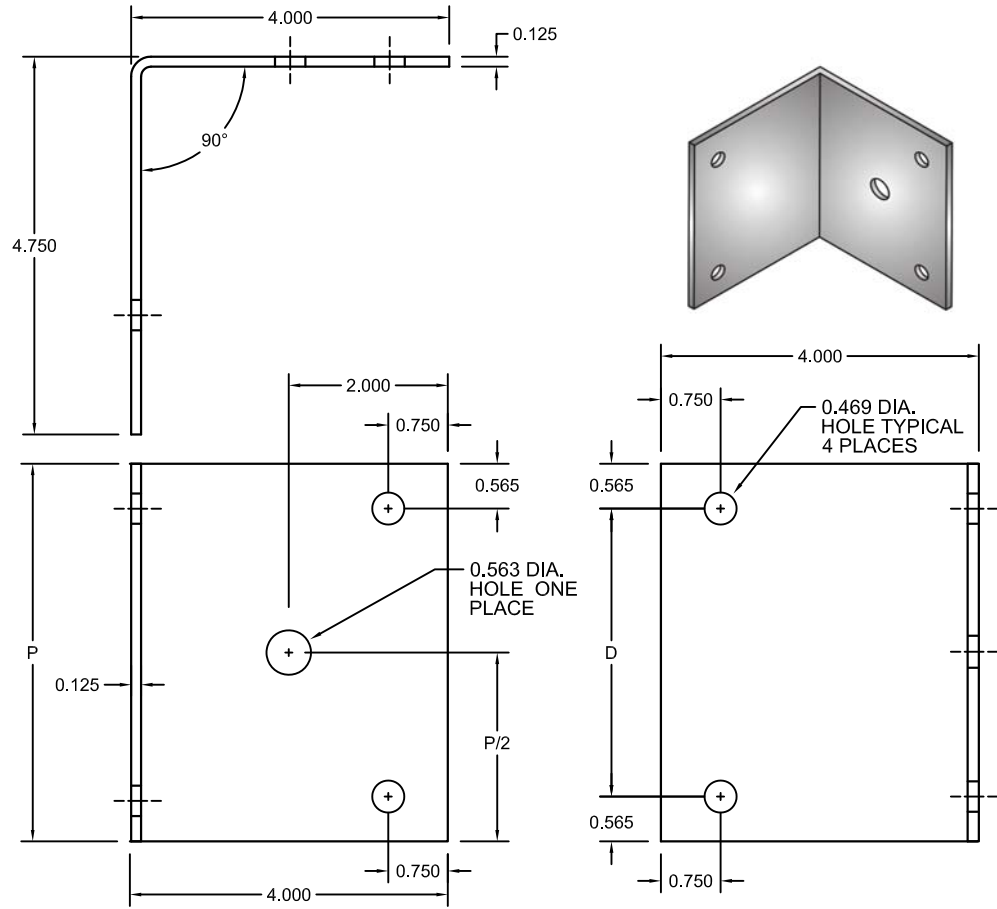




NO.	REVISION	BY	DATE	MATERIAL I.D.
0	APPROVED	TM	12-30-10	SPB
1	ADDED U.L. INFO, REV. LAYOUT	KD	12-05-17	



TRAY SIDE RAIL HEIGHT		CATALOG NUMBER	P	D	MATERIAL	PLATE QTY.	±
H* (NOMINAL)	ACTUAL						
4	4.25"	SPB-A4-(F*)4	3.75"	2.62"	0.125" SHEET	2	
5	5.25"	SPB-A5-(F*)4	4.75"	3.62"	0.125" SHEET	2	
6	6.25"	SPB-A6-(F*)4	5.75"	4.62"	0.125" SHEET	2	
7	7.25"	SPB-A7-(F*)4	6.75"	5.62"	0.125" SHEET	2	

± MARK "√" IN BOX TO INCLUDE IN SUBMITTAL

F*	FASTENER MATERIAL	INCLUDED FASTENERS	FASTENER CATALOG NO.	QTY.	±
G	GEOMET-PLATED STEEL	3/8" x 3/4" RIBBED-NECK SCREW	F-RNS-38-34-G	8	
		3/8" FLANGED HEX NUT	F-FHN-38-G	8	
S	TYPE 316 STAINLESS STEEL	3/8" x 3/4" RIBBED-NECK SCREW	F-RNS-38-34-S	8	
		3/8" FLANGED HEX NUT	F-FHN-38-S	8	

NOTES:

1. COMPLETE ASSEMBLY CONSISTS OF (2) PLATES WITH FASTENERS INDICATED.
2. CENTER HOLE IS SIZED FOR 1/2" DIA. FASTENERS, WHICH ARE SUPPLIED SEPARATELY.

INSTALLATION: INSTALL IN ACCORDANCE WITH NEMA STD. PUBLICATION VE-2 "CABLE TRAY INSTALLATION GUIDELINES".

CLASSIFIED

 CABLE TRAYS EMPLOYING THESE CONNECTORS ARE CLASSIFIED BY UNDERWRITERS LABORATORIES TO BE SUITABLE FOR USE AS EQUIPMENT GROUNDING CONDUCTORS. BONDING JUMPERS ARE NOT REQUIRED TO MAINTAIN GROUND PATH INTEGRITY. RESISTANCE ACROSS COUPLING IS LESS THAN 0.00033 OHMS. CERTIFIED BY U.L. TO MEET NEC. 392 AND NEMA STD. VE1, CSA-C22.2 NO. 126.1.
 UL FILE E341872

MATERIAL: ALUMINUM SHEET 5052-H32
 NOTE: ALL DIMENSIONS ARE SUBJECT TO THE MANUFACTURING TOLERANCE SPECIFICATIONS IN DOCUMENT USP-QA-05-02.

ATKORE		SHEET NO. 1 OF 1
560 WHARTON CIRCLE, SUITE E ATLANTA, GA 30336 USA		PHONE: 404-696-8585 FAX: 404-696-8599
DESCRIPTION 90° BOX CONNECTOR - 4 HOLES		
CATALOG NUMBER SPB-A(H*)-(F*)4	CATALOG NUMBER VARIABLES H* = NOMINAL TRAY SIDE RAIL HEIGHT IN INCHES (4, 5, 6, 7) F* = FASTENER MATERIAL (G OR S)	