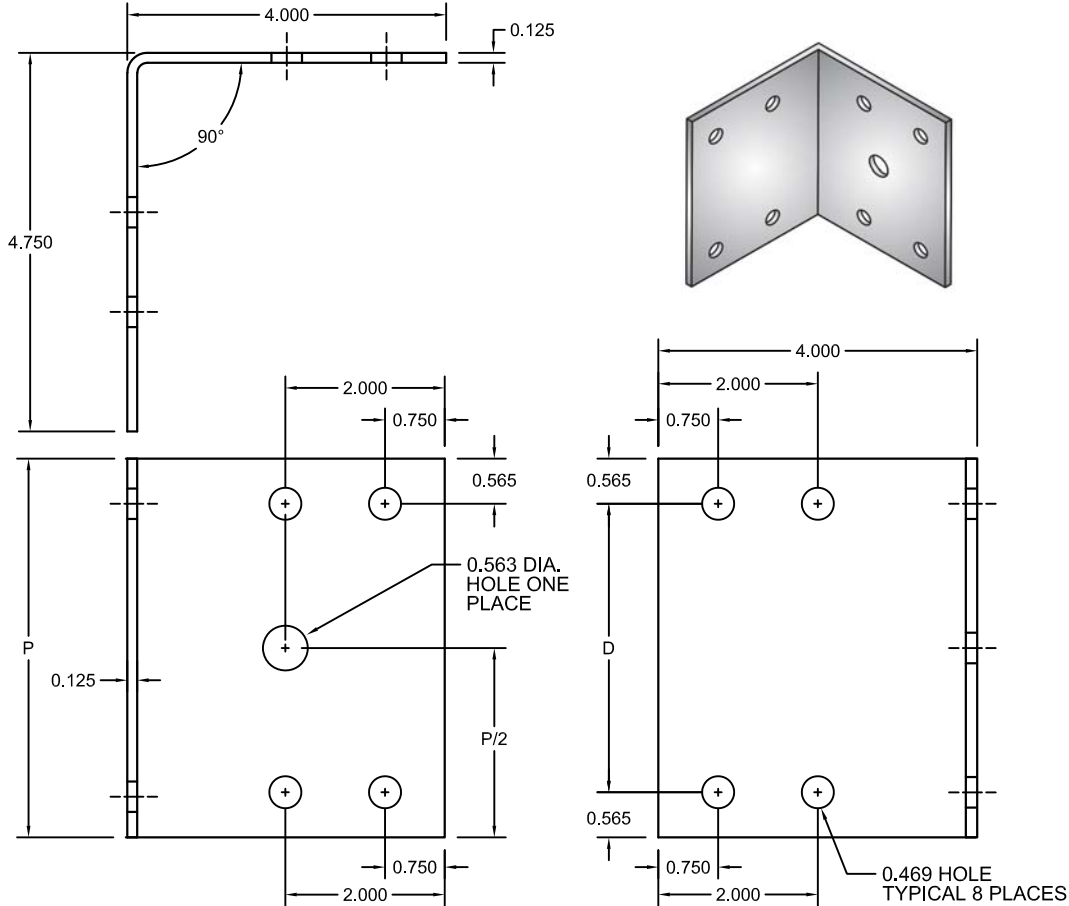




NO.	REVISION	BY	DATE	MATERIAL I.D.
0	APPROVED	TM	12-30-10	SPB
1	ADDED U.L. INFO, REV. LAYOUT	KD	12-05-17	



TRAY SIDE RAIL HEIGHT		CATALOG NUMBER	P	D	MATERIAL	PLATE QTY.	‡
H* (NOMINAL)	ACTUAL						
4	4.25"	SPB-A4-(F*)8	3.75"	2.62"	0.125" SHEET	2	
5	5.25"	SPB-A5-(F*)8	4.75"	3.62"	0.125" SHEET	2	
6	6.25"	SPB-A6-(F*)8	5.75"	4.62"	0.125" SHEET	2	
7	7.25"	SPB-A7-(F*)8	6.75"	5.62"	0.125" SHEET	2	

‡ MARK "√" IN BOX TO INCLUDE IN SUBMITTAL

F*	FASTENER MATERIAL	INCLUDED FASTENERS	FASTENER CATALOG NO.	QTY.	‡
G	GEOMET-PLATED STEEL	3/8" x 3/4" RIBBED-NECK SCREW	F-RNS-38-34-G	16	
		3/8" FLANGED HEX NUT	F-FHN-38-G	16	
S	TYPE 316 STAINLESS STEEL	3/8" x 3/4" RIBBED-NECK SCREW	F-RNS-38-34-S	16	
		3/8" FLANGED HEX NUT	F-FHN-38-S	16	

**NOTES:**

- COMPLETE ASSEMBLY CONSISTS OF (2) PLATES WITH FASTENERS INDICATED.
- CENTER HOLE IS SIZED FOR 1/2" DIA. FASTENERS, WHICH ARE SUPPLIED SEPARATELY.

**INSTALLATION:** INSTALL IN ACCORDANCE WITH NEMA STD. PUBLICATION VE-2 "CABLE TRAY INSTALLATION GUIDELINES".

**CLASSIFIED**  
  
 UL FILE E341872  
 CABLE TRAYS EMPLOYING THESE CONNECTORS ARE CLASSIFIED BY UNDERWRITERS LABORATORIES TO BE SUITABLE FOR USE AS EQUIPMENT GROUNDING CONDUCTORS. BONDING JUMPERS ARE NOT REQUIRED TO MAINTAIN GROUND PATH INTEGRITY. RESISTANCE ACROSS COUPLING IS LESS THAN 0.00033 OHMS. CERTIFIED BY U.L. TO MEET NEC. 392 AND NEMA STD. VE1, CSA-C22.2 NO. 126.1.

**MATERIAL:** ALUMINUM SHEET 5052-H32  
 NOTE: ALL DIMENSIONS ARE SUBJECT TO THE MANUFACTURING TOLERANCE SPECIFICATIONS IN DOCUMENT USP-QA-05-02.

<b>ATKORE</b>		SHEET NO. 1 OF 1
560 WHARTON CIRCLE, SUITE E ATLANTA, GA 30336 USA		PHONE: 404-696-8585 FAX: 404-696-8599
<b>DESCRIPTION</b> 90° BOX CONNECTOR - 8 HOLES		
<b>CATALOG NUMBER</b> SPB-A(H*)-(F*)8	<b>CATALOG NUMBER VARIABLES</b> H* = NOMINAL TRAY SIDE RAIL HEIGHT IN INCHES (4, 5, 6, 7) F* = FASTENER MATERIAL (G OR S)	