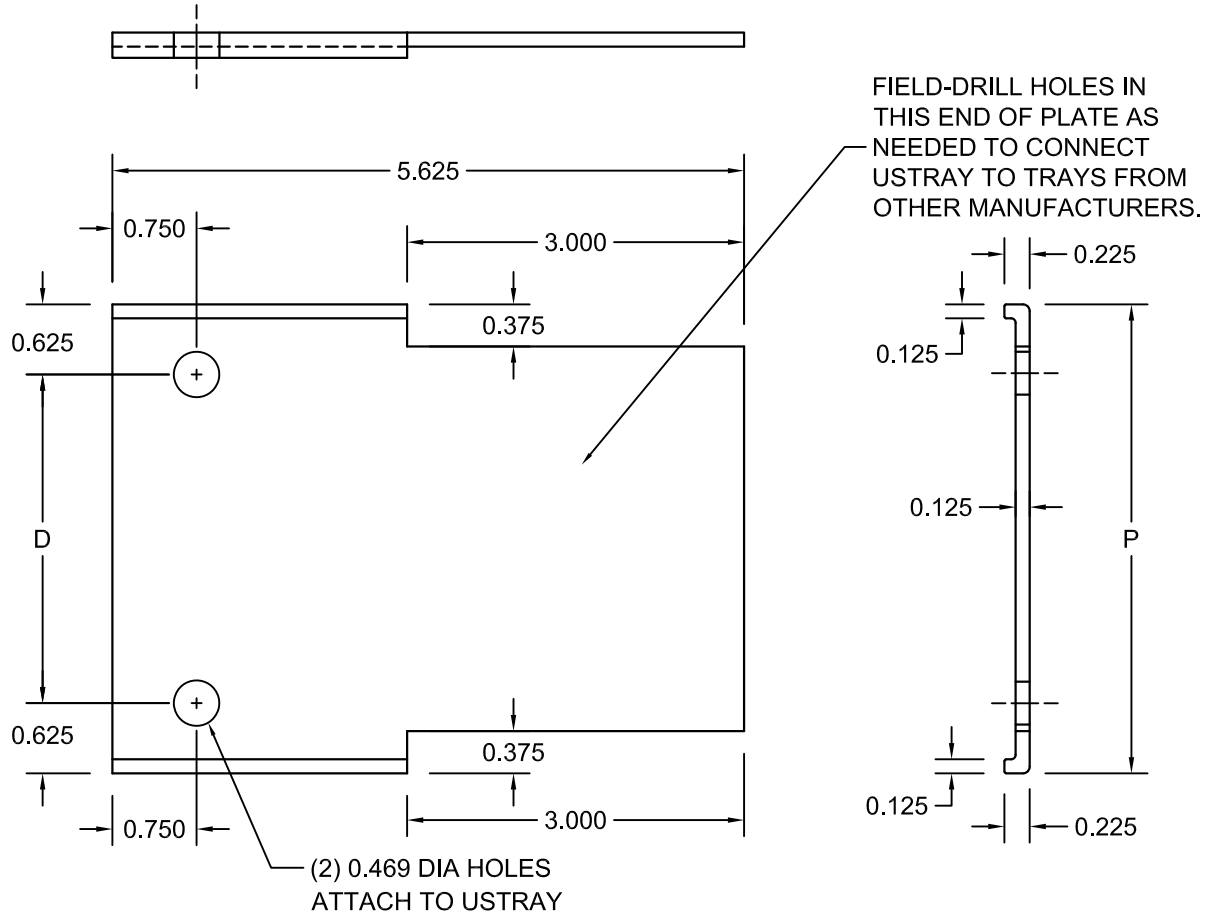




NO.	REVISION	BY	DATE	MATERIAL I.D.
0	APPROVED	TM	04-19-12	SPC-4
1	ADDED U.L. INFO, REV. LAYOUT	KD	12-05-17	
2	REVISED TITLE BLOCK	WW	08-14-18	



TRAY SIDE RAIL HEIGHT		CATALOG NUMBER	P	D	EXTRUSION PROFILE	PLATE QTY.	‡
H* (NOMINAL)	ACTUAL						
4	4.25"	SPC-A4-(F*)4	3.87"	2.62"	EXT-SP-604	2	
5	5.25"	SPC-A5-(F*)4	4.87"	3.62"	EXT-SP-605	2	
6	6.25"	SPC-A6-(F*)4	5.87"	4.62"	EXT-SP-606	2	
7	7.25"	SPC-A7-(F*)4	6.87"	5.62"	EXT-SP-607	2	

‡ MARK "√" IN BOX TO INCLUDE IN SUBMITTAL

F*	FASTENER MATERIAL	INCLUDED FASTENERS	FASTENER CATALOG NO.	QTY.	‡
G	GEOMET-PLATED STEEL	3/8" x 3/4" RIBBED-NECK SCREW	F-RNS-38-34-G	8	
		3/8" FLANGED HEX NUT	F-FHN-38-G	8	
S	TYPE 316 STAINLESS STEEL	3/8" x 3/4" RIBBED-NECK SCREW	F-RNS-38-34-S	8	
		3/8" FLANGED HEX NUT	F-FHN-38-S	8	

NOTES:

1. COMPLETE ASSEMBLY CONSISTS OF (2) PLATES WITH FASTENERS INDICATED.
2. THIS PLATE IS DESIGNED TO CONNECT USTRAY CABLE TRAYS TO THOSE FROM OTHER MANUFACTURERS.

CABLE TRAYS EMPLOYING THESE CONNECTORS DO REQUIRE THE USE OF BONDING JUMPERS IN ORDER TO MAINTAIN THE GROUND PATH INTEGRITY OF THE CABLE TRAY SYSTEM.

MATERIAL: EXTRUDED ALUMINUM 6063-T6

NOTE: ALL DIMENSIONS ARE SUBJECT TO THE MANUFACTURING TOLERANCE SPECIFICATIONS IN DOCUMENT USP-QA-05-02.

ATKORE

560 WHARTON CIRCLE, SUITE E PHONE: 404-696-8585
ATLANTA, GA 30336 USA FAX: 404-696-8599

SHEET NO.
1 OF 1
DIMENSIONS
INCHES

DESCRIPTION

CONVERSION SPLICE PLATES - 4 HOLES

CATALOG NUMBER

SPC-A(H*)-(F*)4

CATALOG NUMBER VARIABLES

H* = NOMINAL TRAY SIDE RAIL HEIGHT IN INCHES (4, 5, 6, 7)
F* = FASTENER MATERIAL (G OR S)