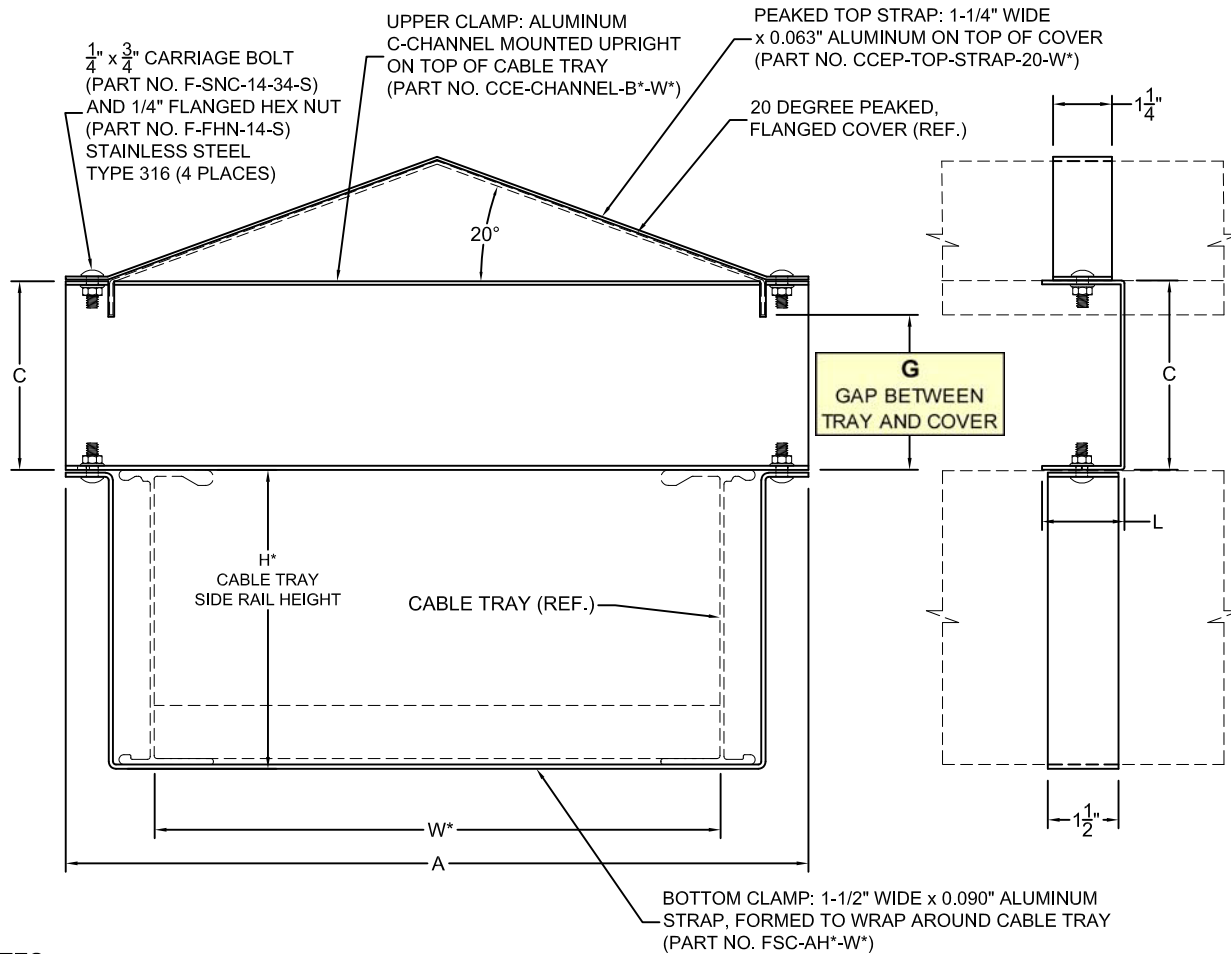




NO.	REVISION	BY	DATE	MATERIAL I.D.
0	APPROVED	TM	09-25-17	CCEP
1	CHANGED BOTTOM CLAMP TO STANDARD FSC DESIGN	TM	01-30-18	



≠	TRAY SIDE RAIL HEIGHT		CATALOG NUMBER
	H* (NOMINAL)	ACTUAL	
	4	4.25"	CCEP-(B*)-A4-(W*)-S
	5	5.25"	CCEP-(B*)-A5-(W*)-S
	6	6.25"	CCEP-(B*)-A6-(W*)-S
	7	7.25"	CCEP-(B*)-A7-(W*)-S
	8	8.25"	CCEP-(B*)-A8-(W*)-S

≠	NOMINAL TRAY WIDTH (W*)		A
	06	6"	9-3/4"
	09	9"	12-3/4"
	12	12"	15-3/4"
	18	18"	21-3/4"
	24	24"	27-3/4"
	30	30"	33-3/4"
	36	36"	39-3/4"

≠	CHANNEL HEIGHT		L
	B*	C	
	1	2.00"	1.50"
	2	3.00"	1.75"
	3	4.00"	1.75"

≠	COVER THICKNESS	COVER FLANGES	G (GAP)		
			B* = 1	B* = 2	B* = 3
	0.040"	0.38"	1.63"	2.63"	3.63"
	0.063"	0.38"	1.63"	2.63"	3.63"
	0.080"	0.75"	1.25"	2.25"	3.25"
	0.090"	0.75"	1.25"	2.25"	3.25"
	0.125"	0.75"	1.25"	2.25"	3.25"
	0.190"	1.00"	1.00"	2.00"	3.00"
	0.250"	1.13"	N/A	1.88"	2.88"

NOTES:

1. COMPLETE ASSEMBLY CONSISTS OF (1) PEAKED TOP STRAP, (1) UPPER CLAMP CHANNEL, (1) BOTTOM CLAMP, (4) 1/4" x 3/4" CARRIAGE BOLTS, AND (4) 1/4" FLANGED HEX NUTS.
2. THIS ITEM IS SUITABLE FOR USE WITH ALL 20 DEGREE PEAKED COVERS INSTALLED OUTDOORS AND IN LOCATIONS WITH EXTREMELY HIGH WINDS.
3. INSTALL ON 36" TO 48" CENTERS ON STRAIGHT TRAYS. ON FITTINGS, INSTALL AT LEAST ONE ON EACH END OF THE FITTING.

MATERIAL: ALUMINUM ALLOYS 6063-T6 AND 5052-H32

FINISH:

HEAT TREAT:

CORE HARDNESS:

NOTE: ALL DIMENSIONS ARE SUBJECT TO THE MANUFACTURING TOLERANCE SPECIFICATIONS IN DOCUMENT USP-QA-05-02.

ATKORE

560 WHARTON CIRCLE, SUITE E PHONE: 404-696-8585
ATLANTA, GA 30336 USA FAX: 404-696-8599

CATALOG NUMBER VARIABLES

B* = NOMINAL GAP HEIGHT IN INCHES
H* = NOMINAL TRAY HEIGHT IN INCHES
W* = NOMINAL TRAY WIDTH INCHES

DESCRIPTION

RAISED COVER CONNECTOR ASSEMBLY FOR 20 DEGREE PEAKED COVERS

SHEET NO.

1 OF 1

DRAWING NUMBER

CCEP-(B*)-A(H*)-(W*)-S

DIMENSIONS

INCHES