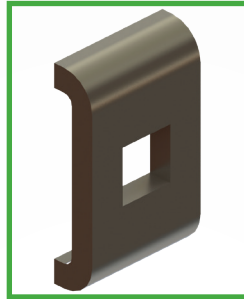


EAGLE BASKET GROUNDING HARDWARE

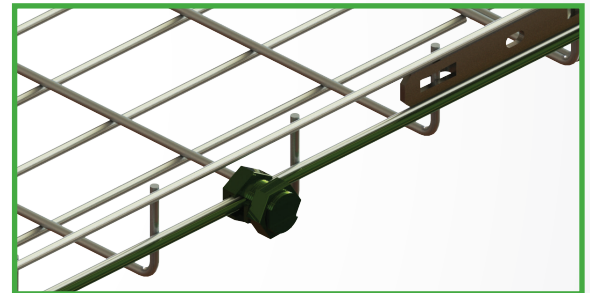
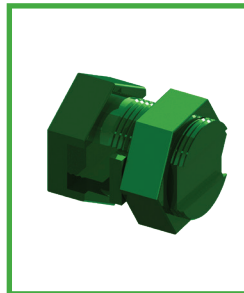
Grounding Clip - EGL- GC

- Connection to splice bars requires a nut and bolt assembly (EG-CBN) purchased separately
- Use on both sides of tray
- Standard finish is pre-galvanized (PG)
- Sold in packs of 10



Grounding Wire Split Bolt - SPLIT-BOLT

- Utilized for the attachment of a separate ground wire
- Use with #6 AWG Ground Conductor
- Copper construction
- Sold individually



Bonding Jumper - CBJ-C

- Order EGL-GC and EBG-CBN separately for installation

